

Cooper River Square West
6981 North Park Drive
Pennsauken, NJ 08109



Building Size: 55,703 SF
Floors: 6
Total SF Available: 15,109 +/- SF
Max. Contiguous: 15,109 +/- SF
Parking Ratio: 4/1,000 SF
Property Type: Office
Building Supervisor: On-Site

- Sixth Floor 9,557 +/- SF
- Fifth Floor 5,552 +/- SF
- Available Immediately
- Commanding views of Philadelphia skyline and Cooper River & park
- Bike lane and walk path along river
- Convenient to Center City Philadelphia
- Vibrant restaurants and shopping nearby



Presented by **WHPounds Commercial Real Estate, LLC**
Elizabeth Pounds Owner/Broker of Record
856-608-9500 or epounds@whprealty.com

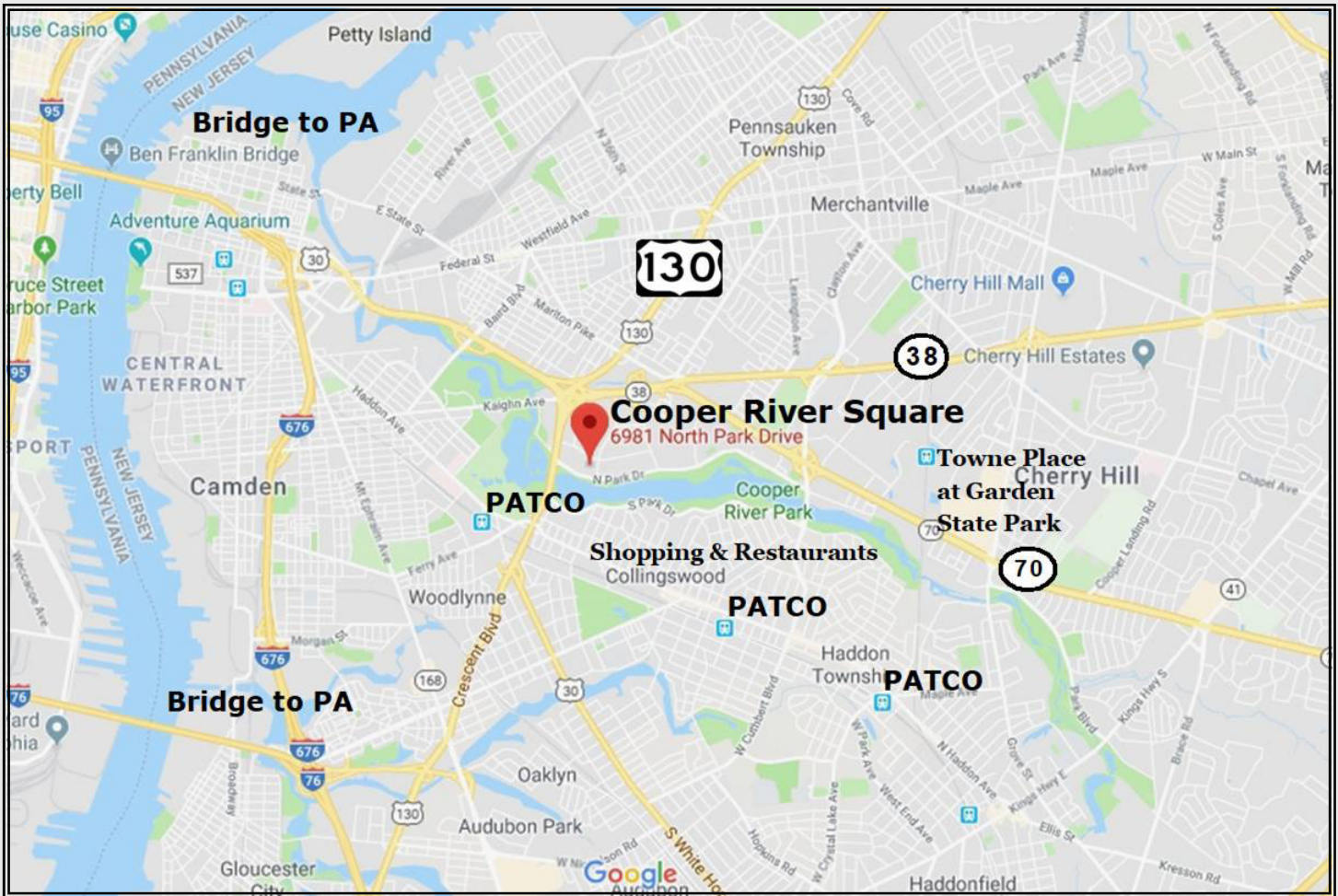


View of Philadelphia skyline as seen from Third and Fourth Floors.

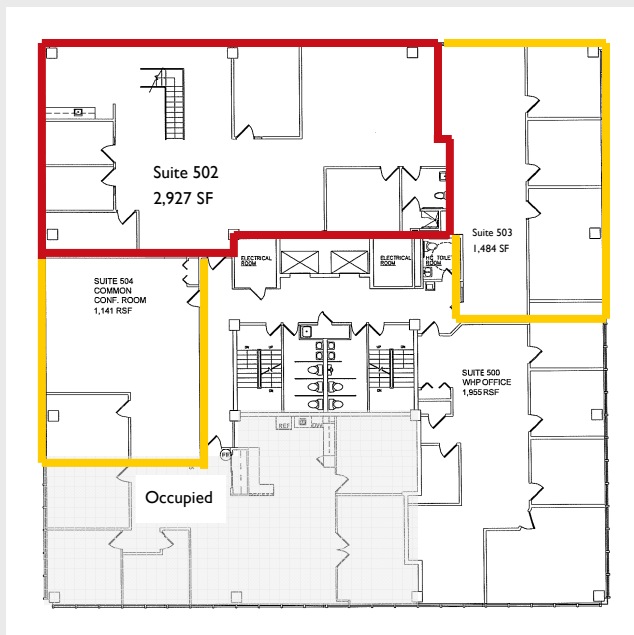
No warranty or representation, expressed or implied, is made as to the accuracy of the information contained herein, and same is submitted subject to errors, omissions, change of price, sale or other conditions, withdrawal without notice, and to any special listing conditions imposed by our principals.

Cooper River Square West
6981 North Park Drive
Pennsauken, NJ 08109

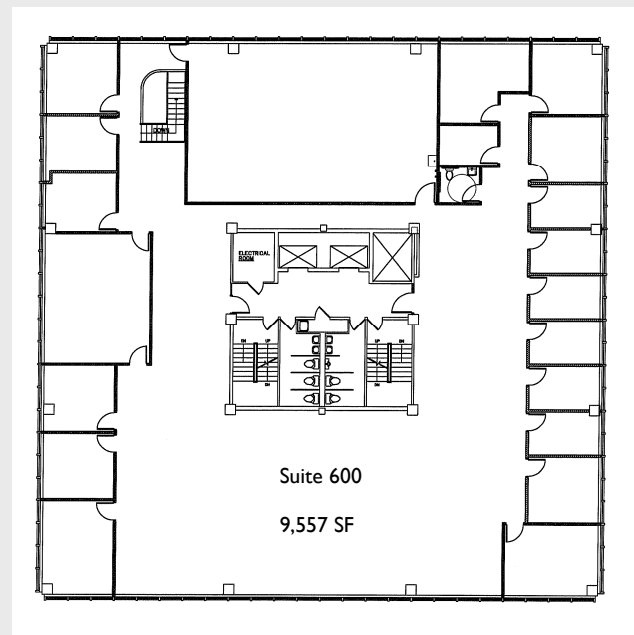
WHPpounds
Commercial Real Estate, LLC



Fifth Floor



Sixth Floor



No warranty or representation, expressed or implied, is made as to the accuracy of the information contained herein, and same is submitted subject to errors, omissions, change of price, sale or other conditions, withdrawal without notice, and to any special listing conditions imposed by our principals.