

Cooper River Square East
6991 North Park Drive
Pennsauken, NJ 08109

WHPounds
Commercial Real Estate, LLC



Building Size: 38,000 SF +/-
Floors: 4
Rental Rate: \$22.00 PSF + Electric
Total SF Available: 8,181 SF +/-
Max. Contiguous: 4,557 SF +/-
Parking Ratio: 4/1,000 SF
Property Type: Office
Year Reconstructed: 2016
Building Supervisor: On-Site

- First Floor 1,692 SF +/-
- First Floor 1,932 SF +/-
- First Floor 4,557 SF +/-
- Available Immediately
- Commanding views of Cooper River & park
- Bike lane and walk path along river
- Convenient to Center City Philadelphia
- Vibrant restaurants and shopping nearby



Presented by **WHPounds Commercial Real Estate, LLC**

William H. Pounds, II Owner/Broker of Record

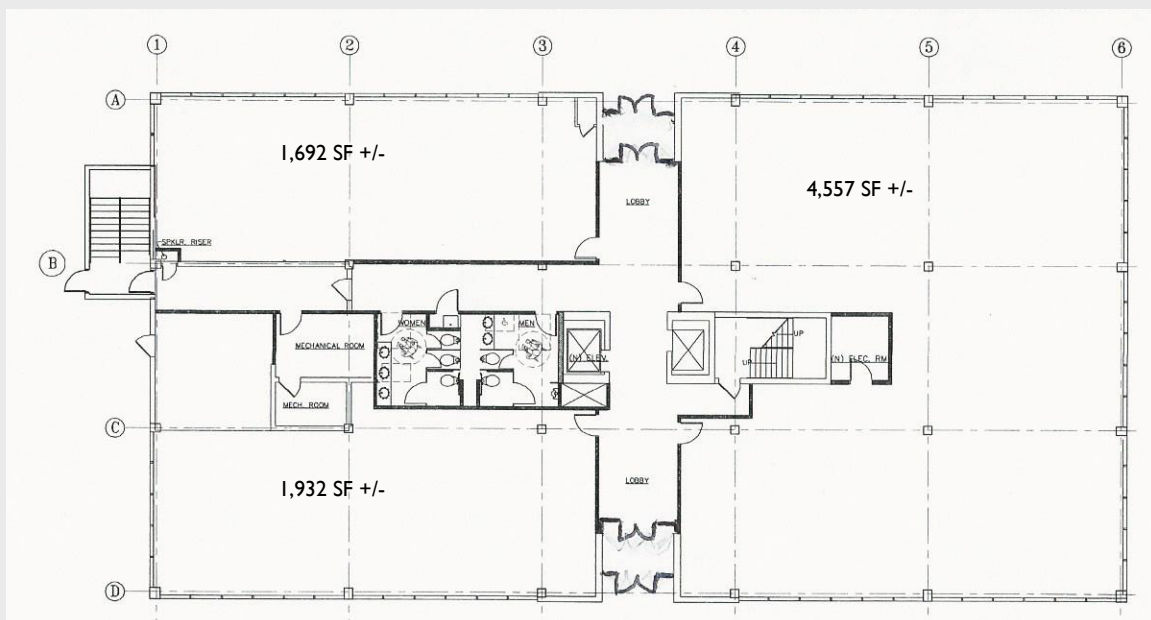
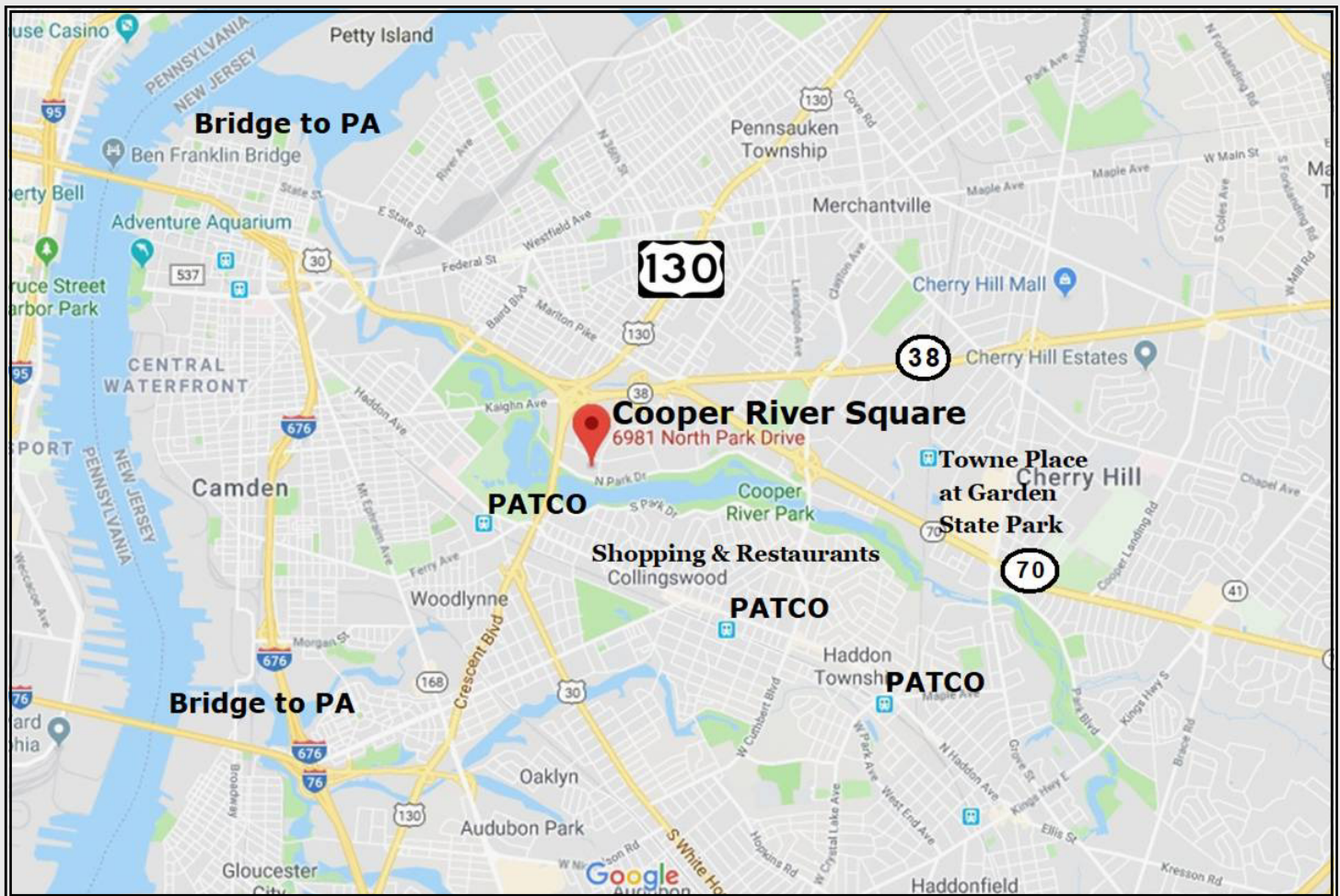
856-608-9500 or wpounds@whprealty.com



No warranty or representation, expressed or implied, is made as to the accuracy of the information contained herein, and same is submitted subject to errors, omissions, change of price, sale or other conditions, withdrawal without notice, and to any special listing conditions imposed by our principals.

Cooper River Square East
6991 North Park Drive
Pennsauken, NJ 08109

WHPounds
Commercial Real Estate, LLC



No warranty or representation, expressed or implied, is made as to the accuracy of the information contained herein, and same is submitted subject to errors, omissions, change of price, sale or other conditions, withdrawal without notice, and to any special listing conditions imposed by our principals.